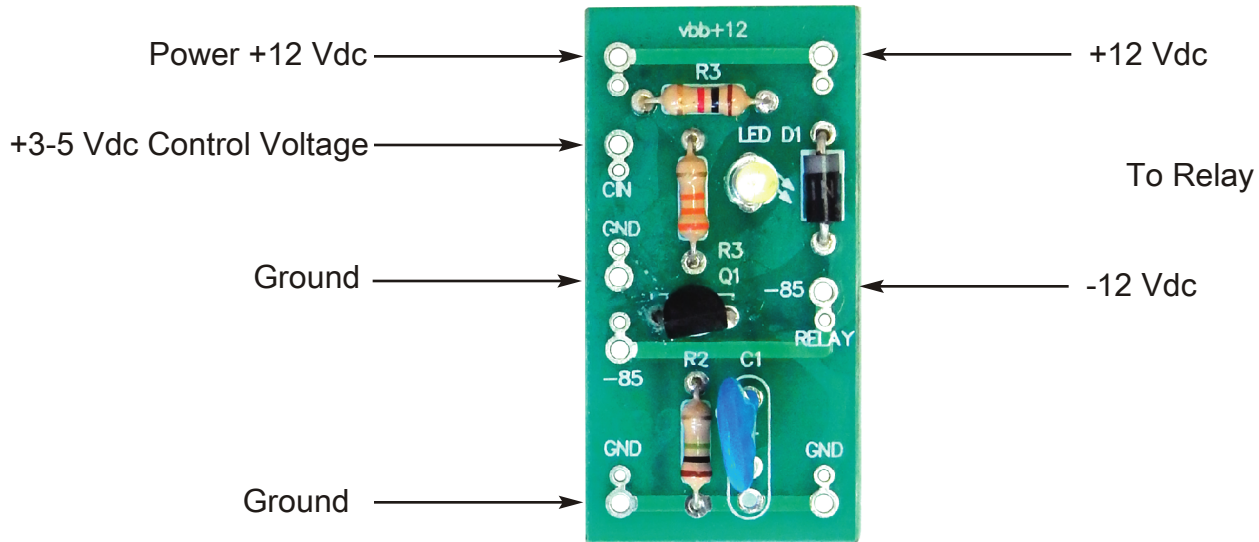


# HOOK-UP-DIAGRAM---CAT#-RDR-1



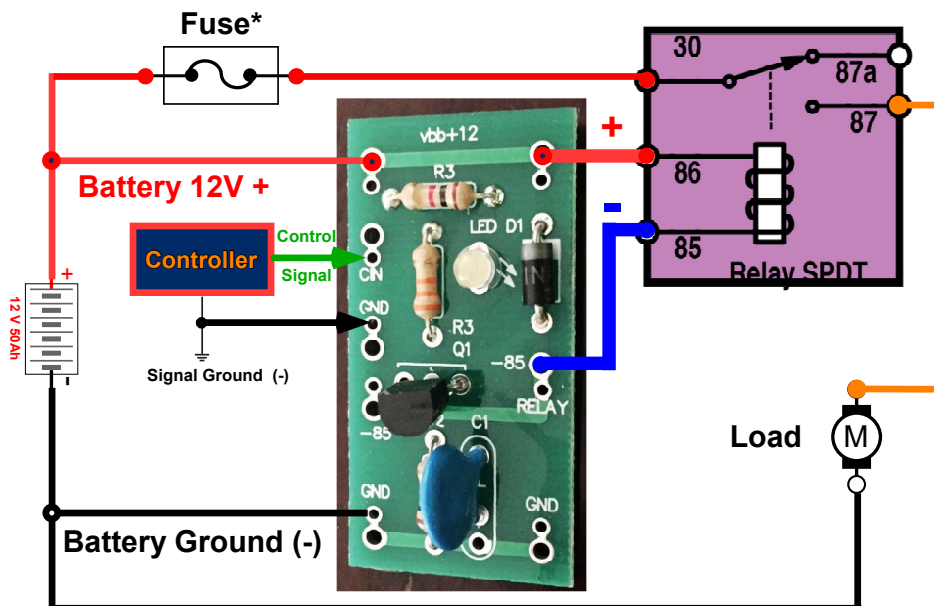
## TYPICAL APPLICATION

### INPUT

**Vbb 12 VDC +**  
**ON Command Signal 3.3 VDC to 5 VDC +**  
**GND (Common System Ground)**

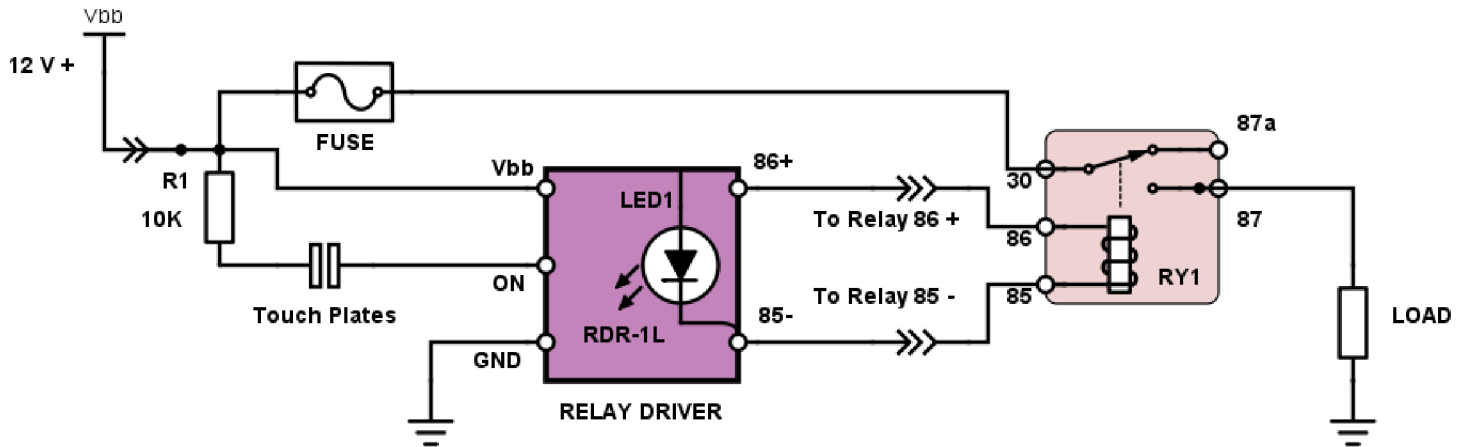
### OUTPUT

**To Relay 86+ = Vbb 12 VDC +**  
**To Relay 85- = Relay ON (Switched to GND)**  
**GND (Common System Ground)**



# ADDITIONAL APPLICATIONS

## Touch Switch



Relay is activated when Touch Plates are “shorted” by a finger touch.

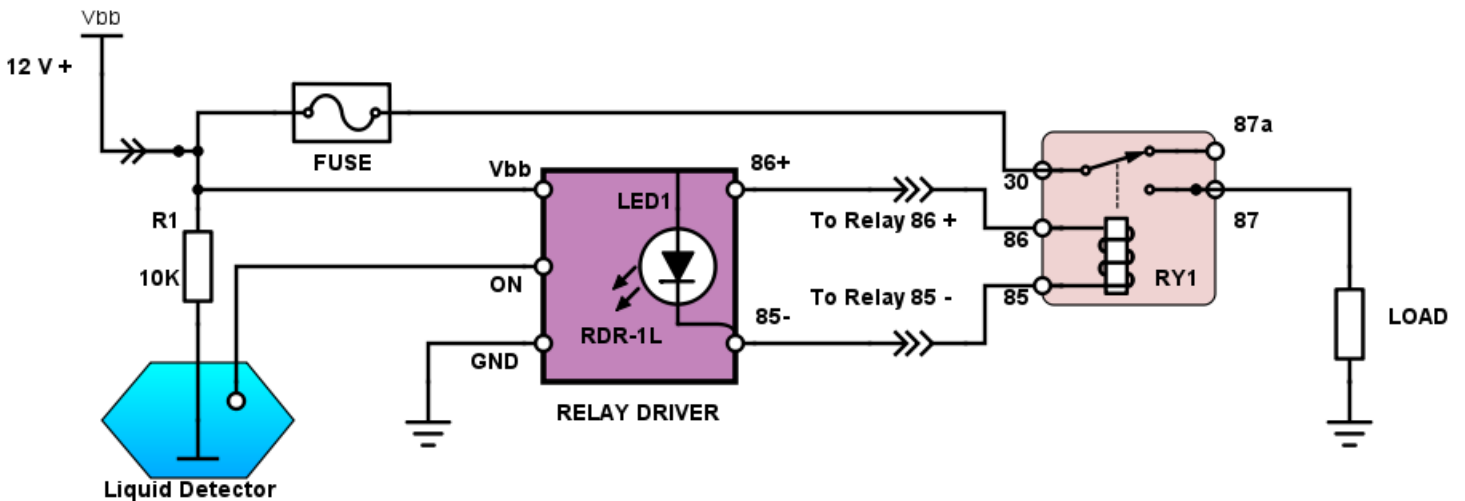
Touch Plates can be any conductive material, and should be separated by at least 1 millimeter (1/16”).

Suggested geometries for Touch Plates:



---

## Liquid Level Sensor Switch



Relay is activated when liquid reaches the level sensed by the “ON” probe.